

Brochure

Get more value from enterprise information

HPE ControlPoint for file analysis



Hewlett Packard
Enterprise

Take control of Big Data with file analysis and turn it into smart data that delivers value

In today's age of Big Data, organizations are faced with the rapid and continuous growth of unstructured information such as email, documents, images, audio, and video. This growth is driven by the digitization of industries, increased organizational governance and regulation, the emergence of new types of information, and the extensive use of mobile devices in the workplace.

Given these trends, it's no surprise that many organizations are overwhelmed by Big Data and are retaining most of their information indefinitely. A large percentage of information kept is redundant, obsolete, and trivial (ROT) and it also includes dark data (data that no one is particularly aware of) living in enterprise systems, essentially using up storage without offering any value. If you don't have the unstructured data management tools to identify, classify, and manage this information, you're probably storing it alongside valuable business information, where it reduces system efficiency and your staff's ability to access and mine it for improved business insight.

Allowing Big Data to accumulate unmanaged, increases your information footprint and the associated cost to store and manage it. With the existence of dark data, your risk of exposure to non-compliance and penalties increase, if subjected to litigation and eDiscovery.

Your ability to retire legacy data and applications, secure sensitive information, optimize storage and systems, and migrate the right information to the cloud is compromised when Big Data is unmanaged. File analysis software from HPE can help you take control of Big Data, so you get more value from your enterprise information by improving performance and reducing costs.

Manage information for cost, compliance, and insight—and deliver more value

The file analysis software, HPE ControlPoint, is part of an integrated policy-based platform that enables you to manage all enterprise information, so you get more value from active and legacy data. HPE ControlPoint will help you to:

- Identify, analyze, and classify information across disparate repositories and various file types
- Present data and file analysis graphically via management dashboards
- Dispose, migrate, and store information based on policy
- Optimize storage utilization, performance, and accessibility
- Address business-sensitive and compliance-driven information collections
- Scale up with business and platform requirements

There are four primary use cases for file analysis, and when combined with information governance software and storage hardware from HPE, you gain greater flexibility and scope to address your Big Data challenges.

Use case 1: Legacy data clean-up

The accumulation of legacy data can be the result of many factors such as legacy applications awaiting retirement, merger and acquisition activity and non-existent information on-boarding processes. Inadequate retention policies and disposal execution, and a lack of tools to deal with Big Data and file analysis in general also contribute. HPE ControlPoint intuitively steps through the five stages of legacy data clean-up, helping you identify ROT and dark data. Once categorized, ControlPoint can automatically apply policy to manage, migrate, or dispose of this information according to its business value.



Figure 1. The five stages of legacy data clean-up

Legacy data clean-up is typically employed to optimize storage and system performance as well as reduce the cost of managing an increasing information footprint. Data clean-up also reduces risk by identifying sensitive information such as Personally Identifiable Information (PII), Personal Health Information (PHI), and Personal Credit Information (PCI) that may be unmanaged in enterprise systems. ROT data present in system repositories delivers no value but increases IT costs unnecessarily.

Use case 2: Policy-based migration

Data migration can be a tedious process that causes disruption to staff and services while taking up considerable IT resources to manage and execute. Why compound these issues by migrating data that no longer has value to the organization? HPE ControlPoint allows you to identify valuable information and quarantine the rest, before conducting a migration project. Policy is used to govern data migration to destination repositories; for instance, your records and unstructured data management or archive system, line of business systems, or the cloud.

For organizations moving their information to the cloud, to prevent breaches of privacy or data sovereignty policy, HPE ControlPoint will help you identify and categorize information according to its business value and sensitivity. This allows you to make an informed decision on whether the information is suitable for a public or private cloud.

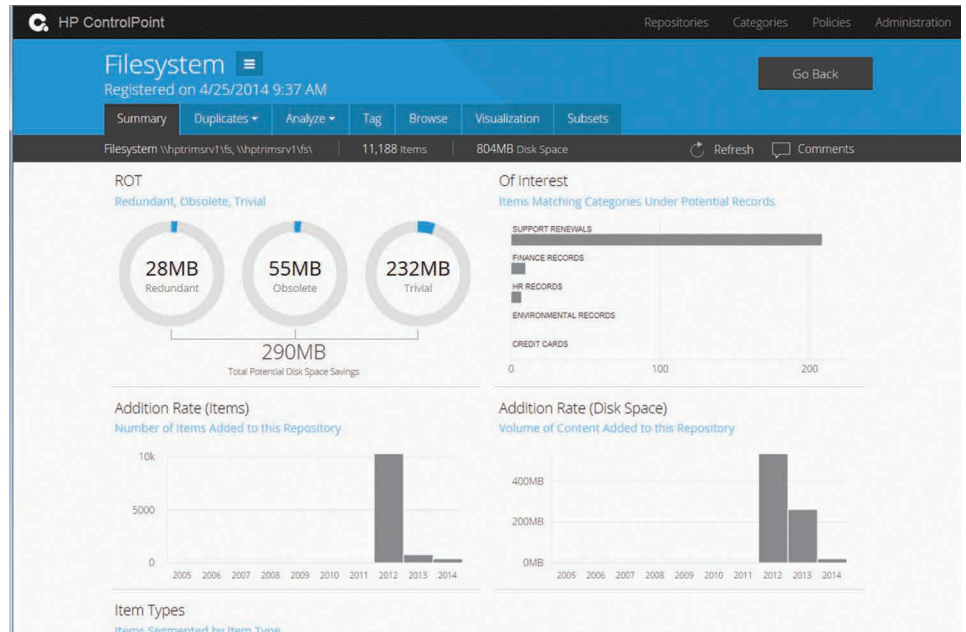


Figure 2. ControlPoint summary analysis dashboard

Use case 3: Automated records declaration

Big Data has had a significant impact on traditional records management practices. The volume and variety of information created as well as consumed means that records management responsibility is being devolved to all staff and not just the records specialists. The process of classifying and applying policy is more time consuming and error prone than before, resulting in a backlog of information to be assessed and an increasing number of records being incorrectly classified—which exposes you to risk.

HPE ControlPoint can identify records sitting unmanaged in system repositories and apply policy to either manage-in-place or migrate the records to your records management system. When combined with HPE Records Manager, ControlPoint can be trained on the file plan to categorize records according to your existing conventions and then migrate them to HPE Records Manager where they will be auto-classified and managed with appropriate retention and security policies applied.

Use case 4: Retention and storage optimization

Today more than ever, business performance is dependent on having access to accurate information and your ability to find, understand, re-use, and deliver this information promptly in response to a request. Information resides in multiple systems governed by different policies and in many cases needs to be migrated to a records or archive system for its long-term retention. Storage may not be secure or immutable, increasing risk of non-compliance for sensitive data. These disparate systems not only reduce your ability to comply with regulations and secure content, but also to respond promptly.

To address these challenges, HPE combines file analysis and electronic document and records management (EDRM) software with archival storage to provide intelligent retention and content management. This solution retains information according to business value while optimizing storage for improved accessibility and reduced cost.

The HPE advantage

HPE delivers end-to-end Big Data solutions that combine file analysis, unique meaning-based software, market-leading hardware, cloud storage, and world-class services. The HPE modular information governance portfolio allows you to implement a combination of products to satisfy your unique business needs. With file analysis, an integral component of the HPE Information Governance portfolio, you have the power to conduct intelligent identification, assessment, and policy-based migration, retention, or disposal of your information. It maximizes storage efficiency, accessibility, security, and compliance—while also reducing complexity, cost, and risk.

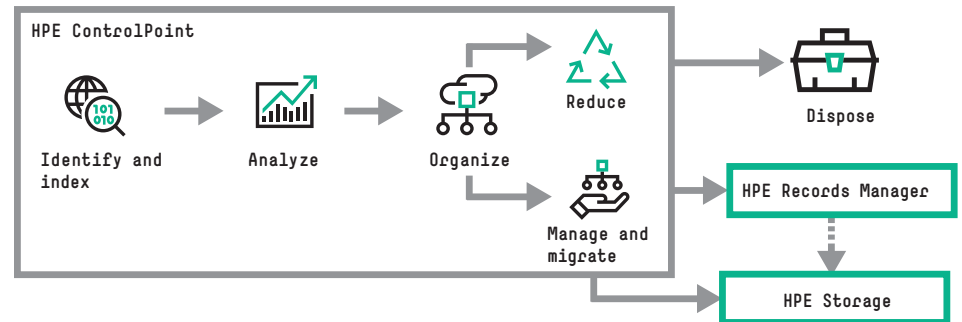


Figure 3. HPE Intelligent Retention and Content Management solution

Learn more at hpe.com/software/controlpoint



Sign up for updates

★ Rate this document

