

# Machine learning boosts application uptime

## Methodology



HPE Nimble Storage analysed more than **12,000** instances of app problems

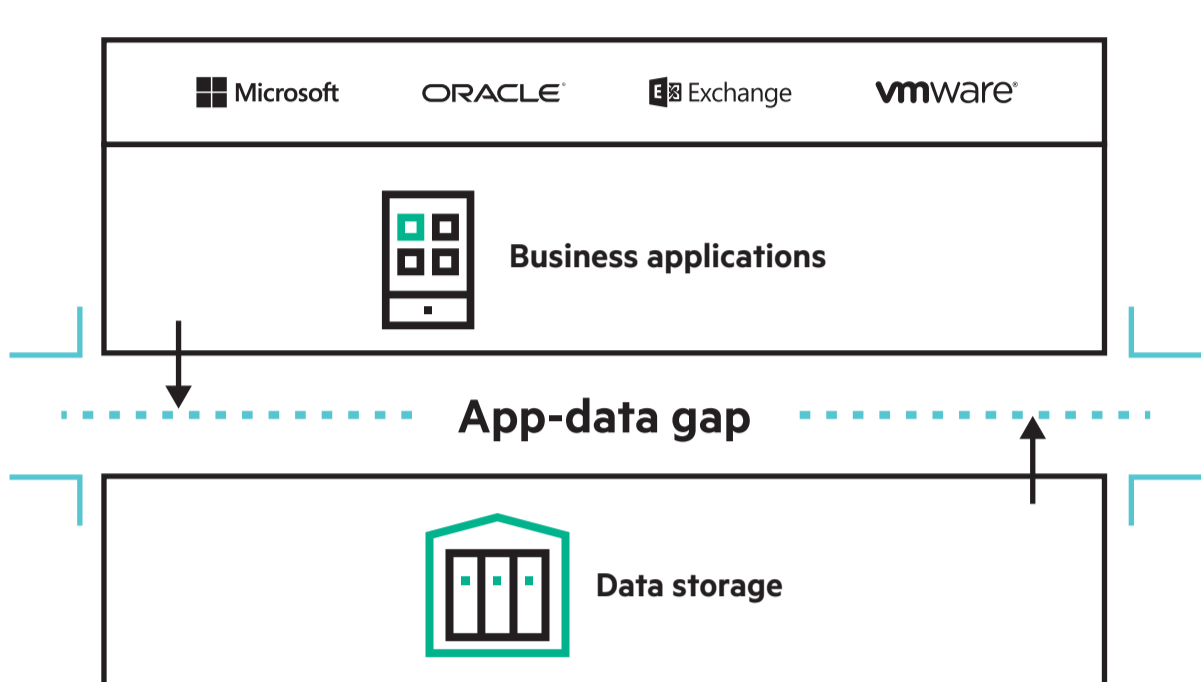


From a range of IT infrastructure across **7500+** customer environments

Using the predictive analytics platform from HPE InfoSight, the results show

## The app-data gap is real

Disrupted data delivery stalls businesses, creating the **app-data gap**.

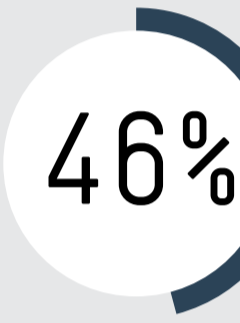


Storage is normally the first suspect when identifying the causes of the app-data gap, but the facts tell a different story.

## Key findings

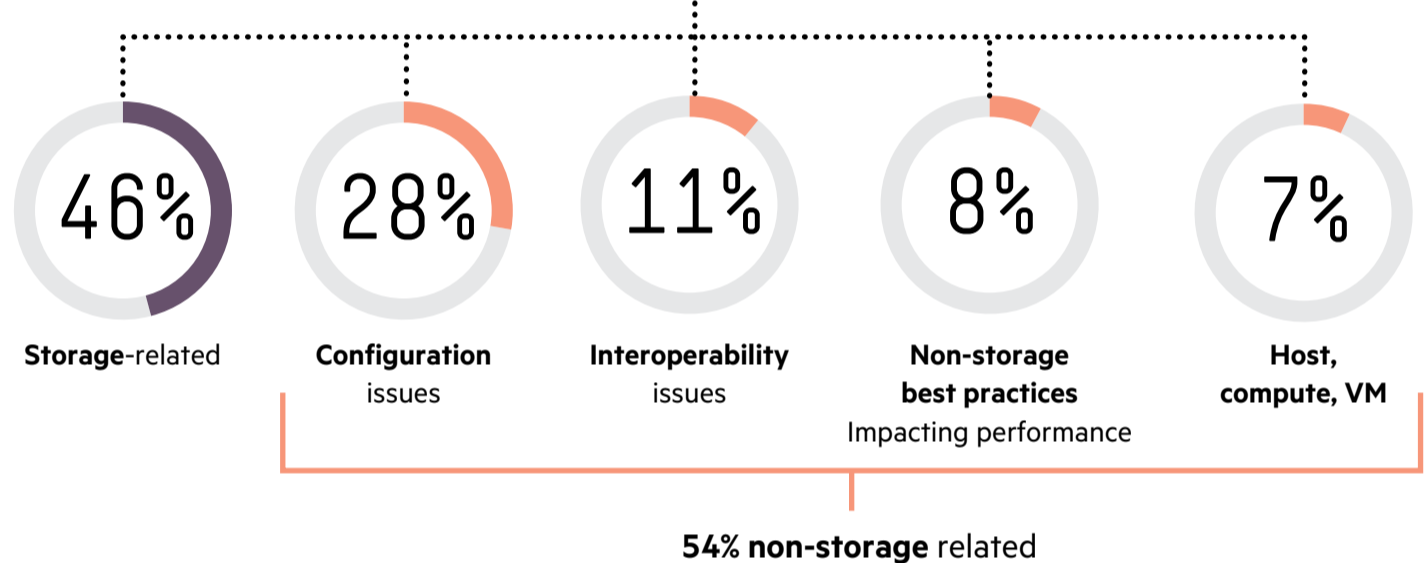


of issues had nothing to do with storage, resulting instead from configuration, interoperability and other problems.

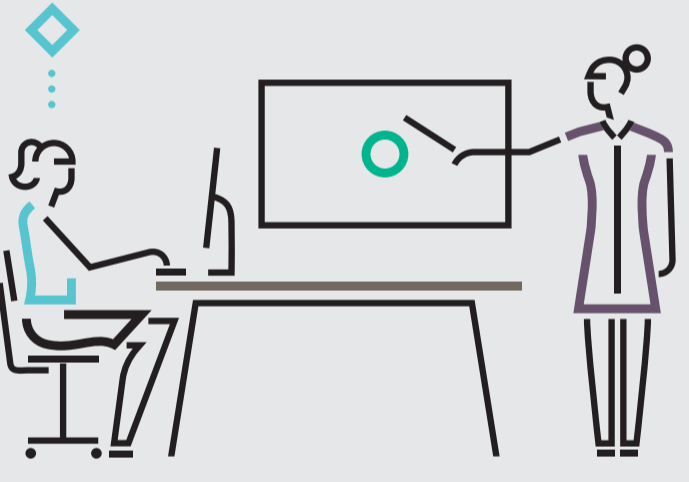


of issues were related to storage, including hardware and software issues and occasionally performance.

## Causes of the app-data gap



## Flash alone isn't enough



Infrastructure complexity makes it difficult to pinpoint the real problem, resulting in

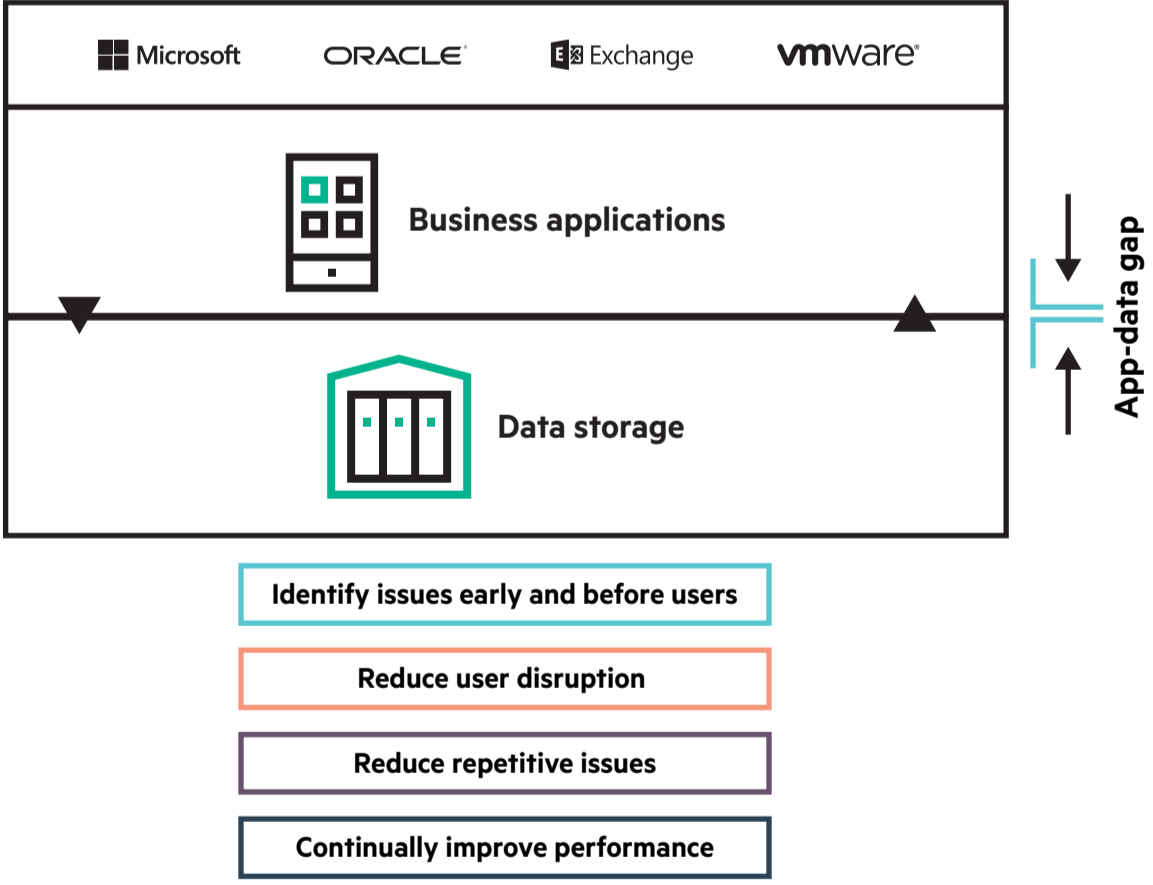
- Extended downtime and frustration
- Inefficient use of IT resources and budget
- Long hours spent resolving cross-vendor issues

And upgrading hardware wouldn't solve majority of application issues

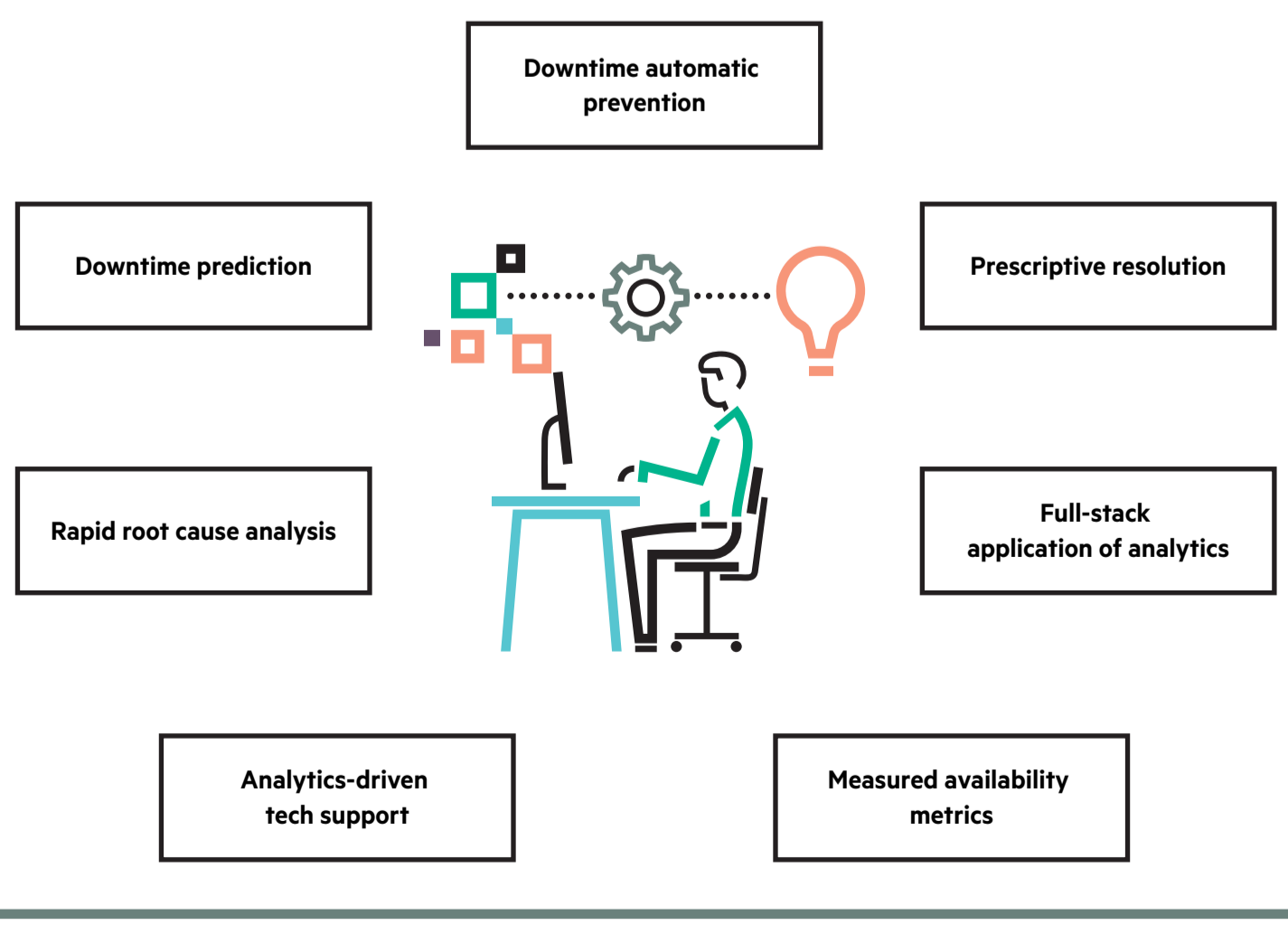
## It's time to close the app-data gap

Predictive analytics based on machine learning boosts application performance and mitigates downtime by closing the app-data gap.

## Predictive analytics platform is key



## Seven capabilities to look for when you evaluate storage solutions



Learn how to harness the power of machine learning to boost productivity.

Read the full report **"Can Machine Learning Prevent Application Downtime?"**

Learn more at [hpe.com/info/infosight](http://hpe.com/info/infosight)