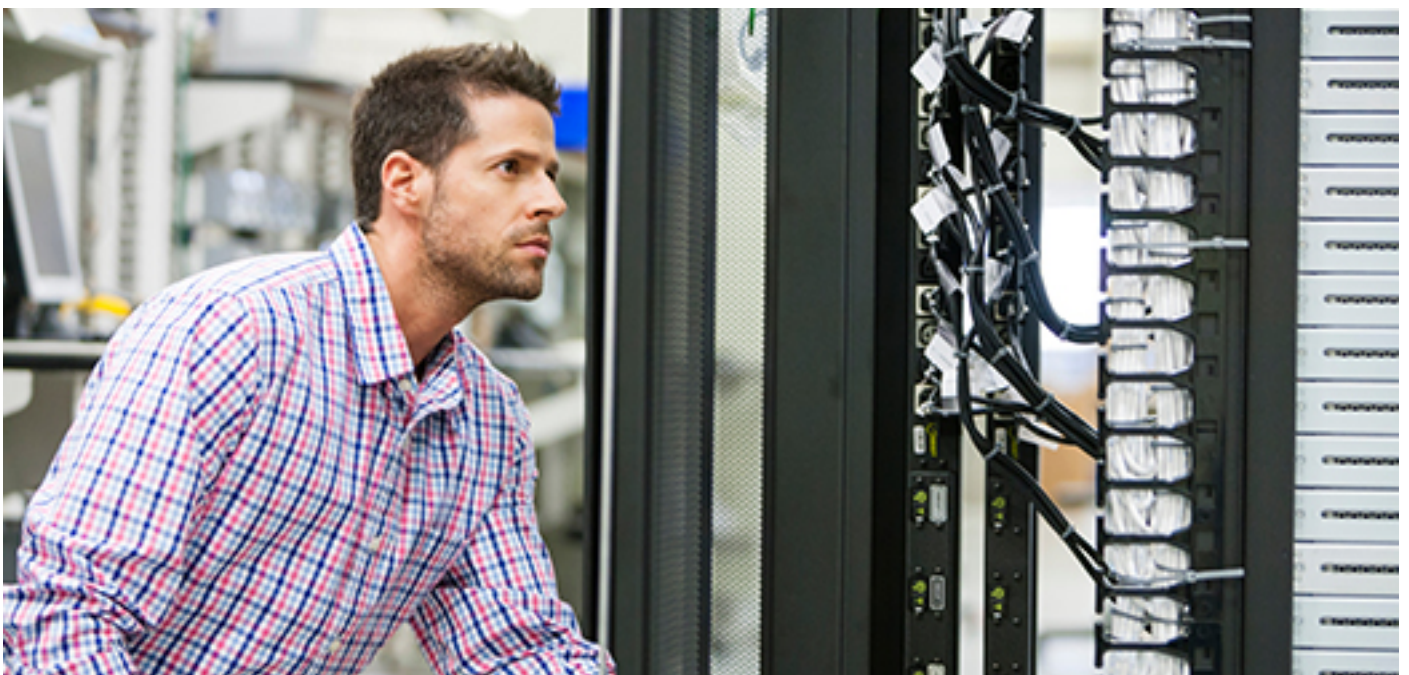




Using HPE RDX with Windows Backup



This guide shows step-by-step instructions on how to configure HPE RDX drives in a fixed disk mode, which in turn will allow RDX to be used with a Windows® Backup solution.

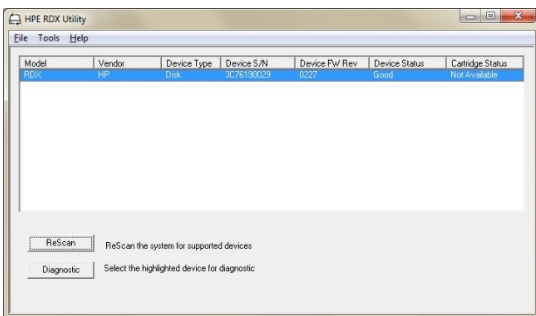
The built-in Windows Backup software included with current Windows operating systems is a great way to capture a copy of your system and data.

HPE RDX USB 3.0 drives have the ability to set a compatibility mode for use with Windows Backup. With this (fixed) mode, HPE RDX can be seen by the Windows operating system as a local fixed disk in order for Windows Backup to target HPE RDX.

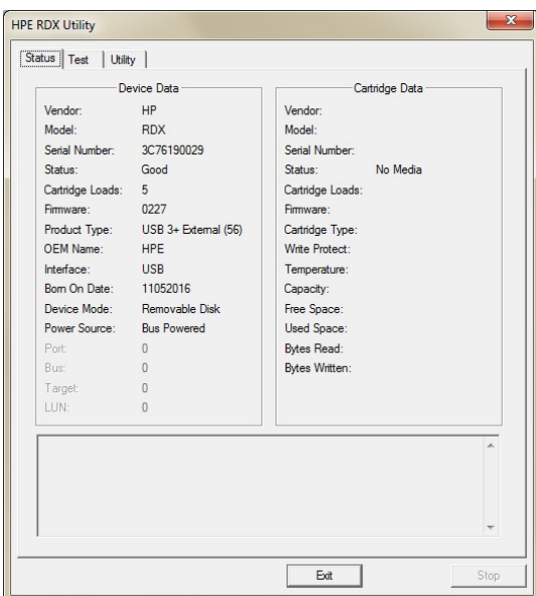
Use the HPE RDX Utility to change the device mode and to verify the drive firmware version. Download the latest versions of the HPE RDX Utility and drive firmware from hpe.com/support/rdx.

Start the HPE RDX Utility and confirm:

- The Utility Installer version is 1.54 or later (via **Help, About Utility...**)
- The drive firmware is 2.10 or later (in the example below, version 2.27 has been installed. **See Device FW Rev**).

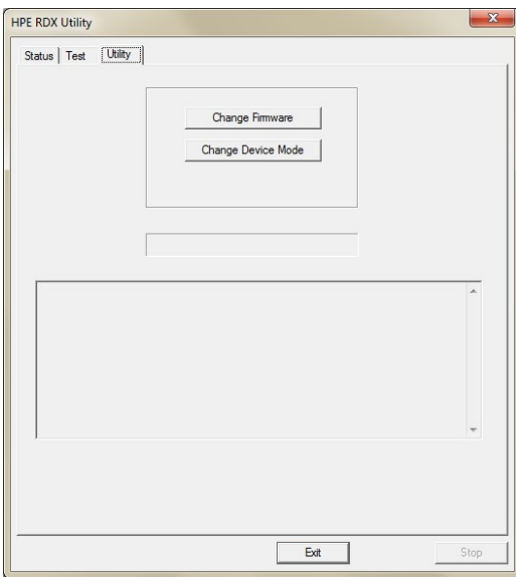


Step 1: Click on **Diagnostic**. If there is a RDX cartridge loaded inside the drive, eject it.



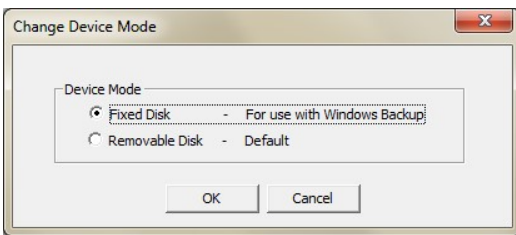
Step 2: Select the **Utility** tab.



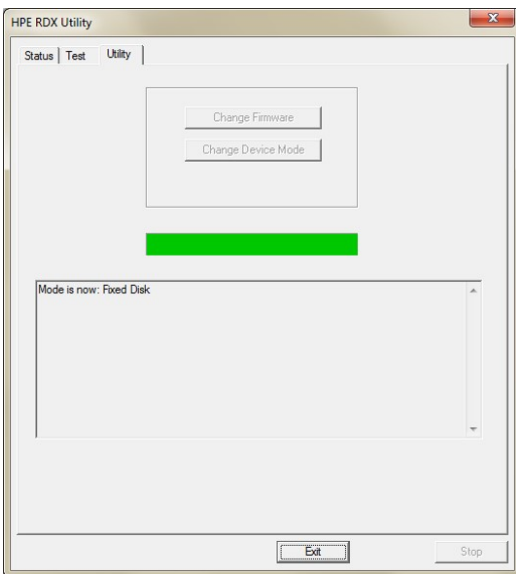


Step 3: The **Change Firmware** button can be used to update the firmware if necessary. The latest firmware can be downloaded from hpe.com/support/rdx.

Otherwise, click on **Change Device Mode**.



Step 4: Choose **Fixed Disk** and click **OK**.



Step 5: Check the status message in the lower part of the window, and confirm the **Mode is now: Fixed Disk**.

Click **Exit** and close the RDX utility window.

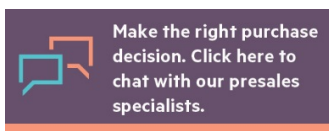


Configuration guide

To run Windows Backup, select **Backup and Restore** (Windows 7 and Windows 10) from the Windows Control Panel. For Windows Server® 2012 run **Windows Server Backup**. Start the backup application and follow the steps in the wizard.

For additional support regarding Windows Backup, consult the relevant Help and Support information within Windows.

Learn more at
hpe.com/storage/rdx



 **Share now**

 **Get updates**

© Copyright 2017–2018 Hewlett Packard Enterprise Development LP. The information contained herein is subject to change without notice. The only warranties for Hewlett Packard Enterprise products and services are set forth in the express warranty statements accompanying such products and services. Nothing herein should be construed as constituting an additional warranty. Hewlett Packard Enterprise shall not be liable for technical or editorial errors or omissions contained herein.

Windows and Windows Server are either registered trademarks or trademarks of Microsoft Corporation in the United States and/or other countries. All other third-party marks are property of their respective owners.

a00005281ENW, December 2018, Rev. 3

