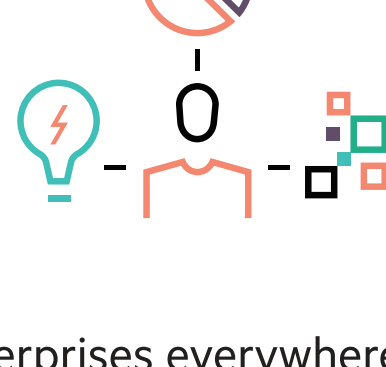


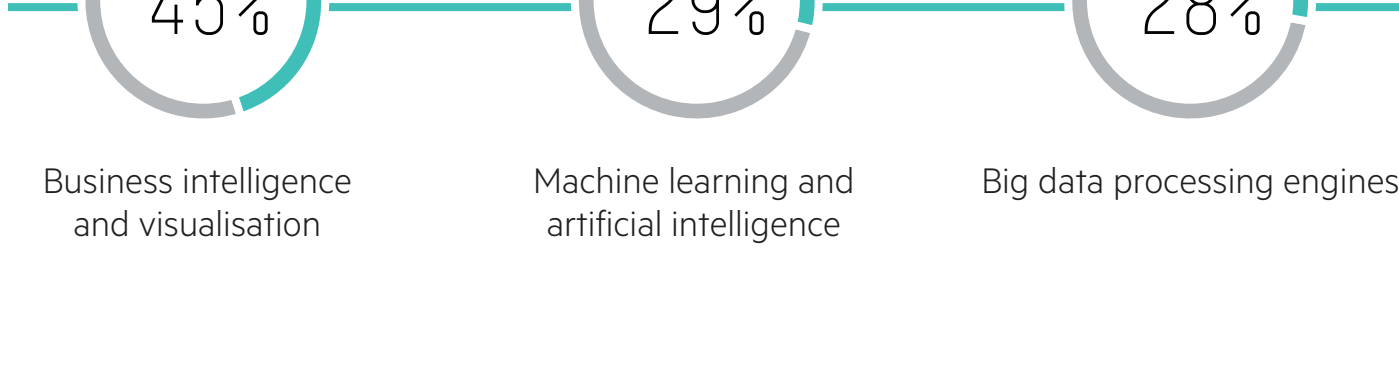
Your AI roadmap to digital transformation



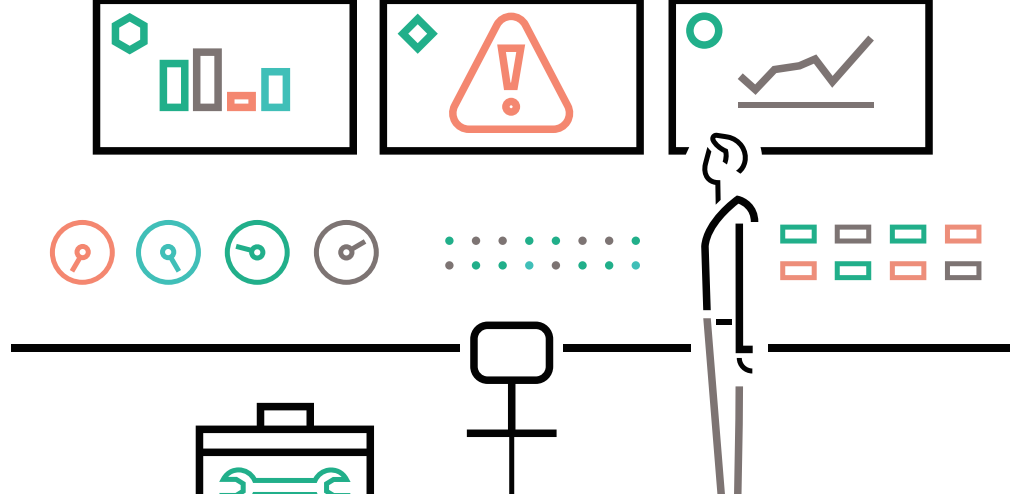
Turn data into action and transform enterprise analytics

Enterprises everywhere cite artificial intelligence, advanced analytics, and big data as **digital transformation priorities**.

Top three IT priorities for 2018¹



At the same time, **exploding volumes of real-time data** are too much for even specialists to analyse and act on.



<.05% of data is actually used by enterprises.²

And a majority of enterprises are far from prepared for what's coming next: **automation**.

60% of enterprises have no formal data transformation strategy in place.³

59% of enterprises see the shortage of data science talent as the primary barrier to realising big data value.⁴

Enterprises want to embrace automation, but that requires a **modern big data foundation** with advanced analytics layers.

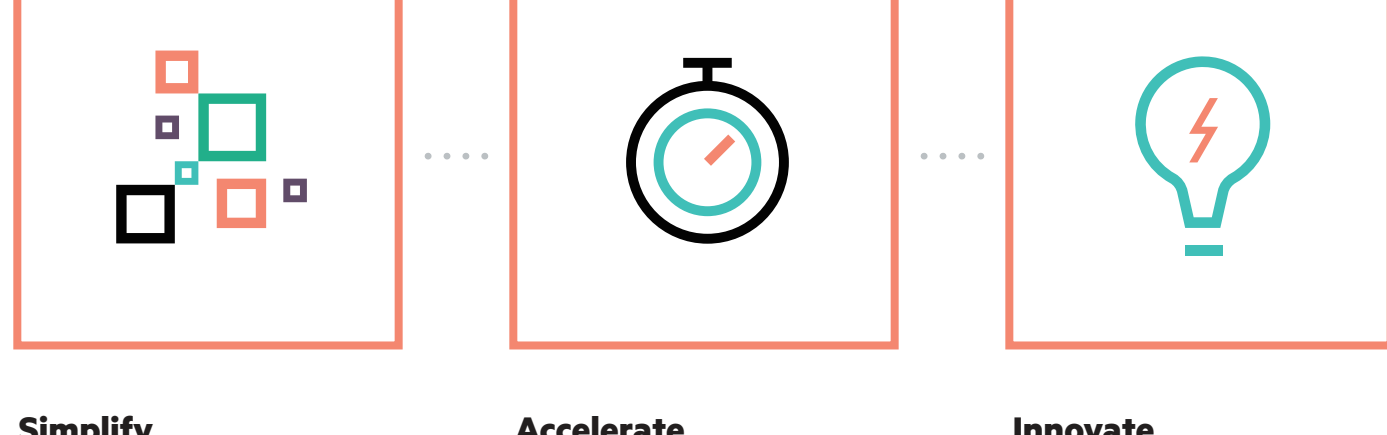
Artificial intelligence (AI) can advance your data and analytics initiatives.

84% of enterprises believe investing in AI will lead to greater competitive advantages.⁵

How do you get beyond the hype and realise the benefits of AI today?

1 Focus on real business outcomes

Access to affordable technologies and advanced AI models and libraries make it possible to solve real business problems with AI.



Simplify
Build and consume open, flexible solutions for secure data lakes, big data, and integrated analytics.

Accelerate
Predict and automate outcomes and decisions from edge to core by applying AI.

Innovate
Identify and apply emerging technologies and AI to industry-specific use cases.

2 Take an architectural approach

HPE Pointnext helps you understand your choices and offers objective guidance based on your business and our vision for AI.

<p>Enterprise reality: As the AI ecosystem grows, new frameworks, methods, and models appear daily, and vendor lock-in stymies progress.</p>		<p>What HPE Pointnext delivers: Freedom of choice, the right AI model and language, expertise in Hybrid and edge IT, and the ability to integrate your AI ecosystem</p>
<p>HPE vision for AI: Highly democratized AI</p>		

<p>Enterprise reality: Enterprises need the flexibility to move analytic workloads to new environments or deploy in Hybrid IT environments.</p>		<p>What HPE Pointnext delivers: Integrated data pipeline to provide custom and advanced analytics and AI for business insights</p>
<p>HPE vision for AI: Integrated analytics</p>		

<p>Enterprise reality: Distributed data sets with difficult-to-describe dependencies and delivery mechanisms result in monolithic, static environments.</p>		<p>What HPE Pointnext delivers: Standardised data foundation and data lakes with simplified, secure access to IoT data—edge to core for different workloads</p>
<p>HPE vision for AI: Centralized data architecture</p>		

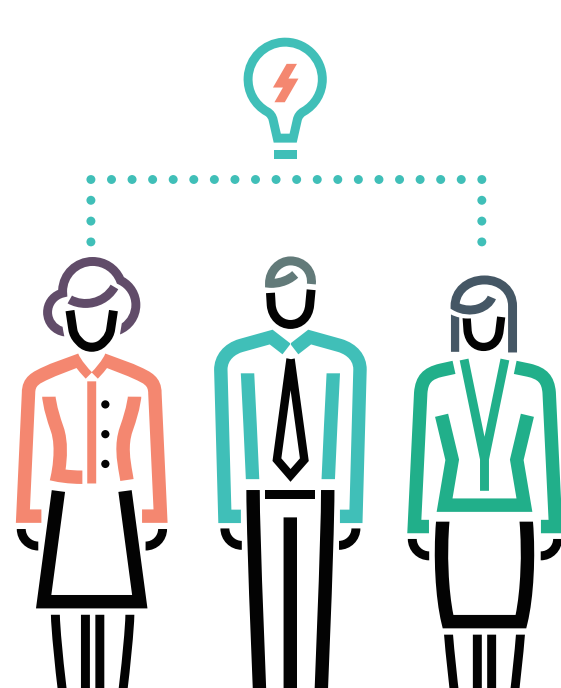
3 Embrace incremental AI success

Offer stakeholders novel opportunities, valid outcomes, and a clear path forward with HPE Pointnext.

- Explore**
Align teams around a common vision by identifying AI, data, analytics outcomes, and challenges, and exploring use cases and developing high-level plans.
- Experiment**
Prove the value of AI in your environment with a select use case and model aligned to your business need. Design analytics scope and load, qualify data, and implement analytics functions.
- Evolve**
Evolve your solutions by protecting and modernising your data platforms, deploying new use cases, offering consumption-based models, and managing change with ongoing support and training.

Where do you start? With a trusted global partner.

HPE Pointnext provides experts that deliver a strong point of view, freedom from vendor lock-in, and a grounded approach to AI that ignores the hype and focuses on business results.



Get started now with the HPE Artificial Intelligence Transformation Workshop from HPE Pointnext.

Learn more by visiting: hpe.com/services/ai-data

¹ 451 Research, Voice of the Enterprise: Digital Pulse, Budget and Outlook 2017
² MIT Technology Review, Big Data: Creating the Power to Move Heaven and Earth, 2014
³ 451 Digital Pulse Survey, 2018
⁴ What's the Big Data, Artificial Intelligence Is the New Big Data, 2016
⁵ Statista, Reasons for Adopting AI Worldwide, 2017