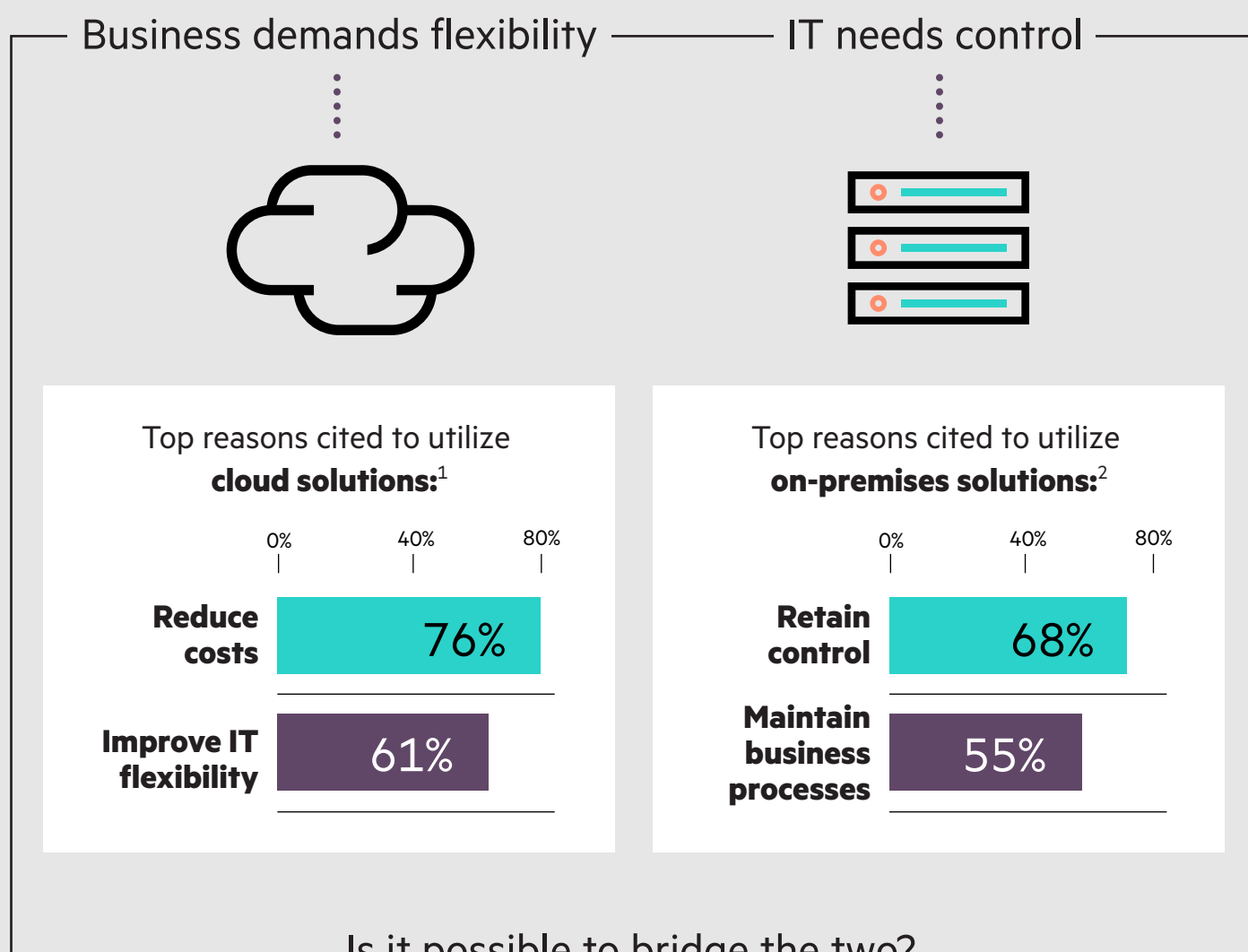


Gain public cloud advantages while retaining on-premises control

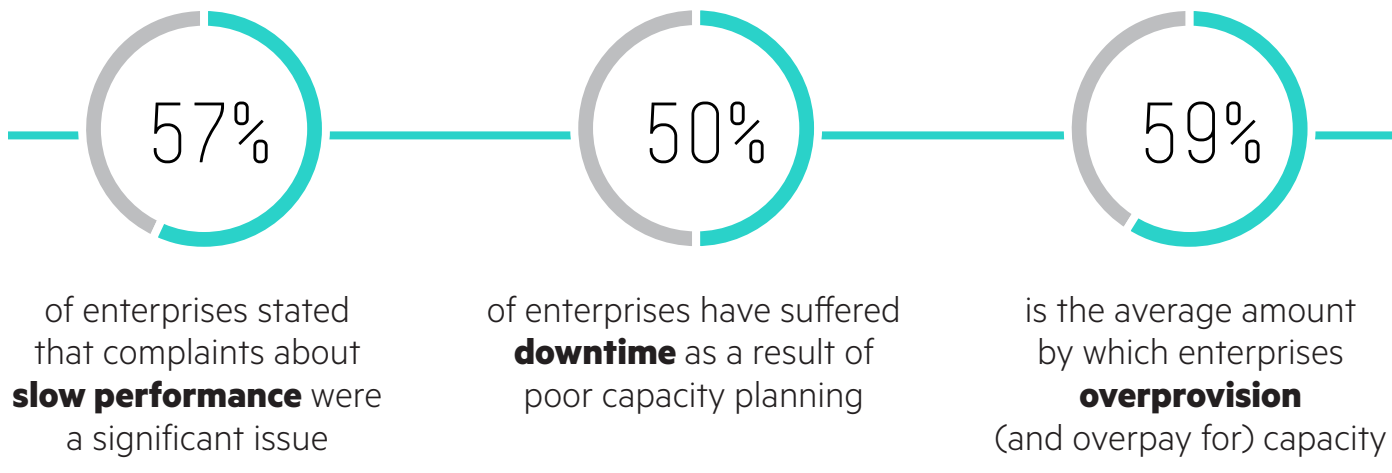
Balance IT flexibility, cost and control with accelerated outcomes on your terms



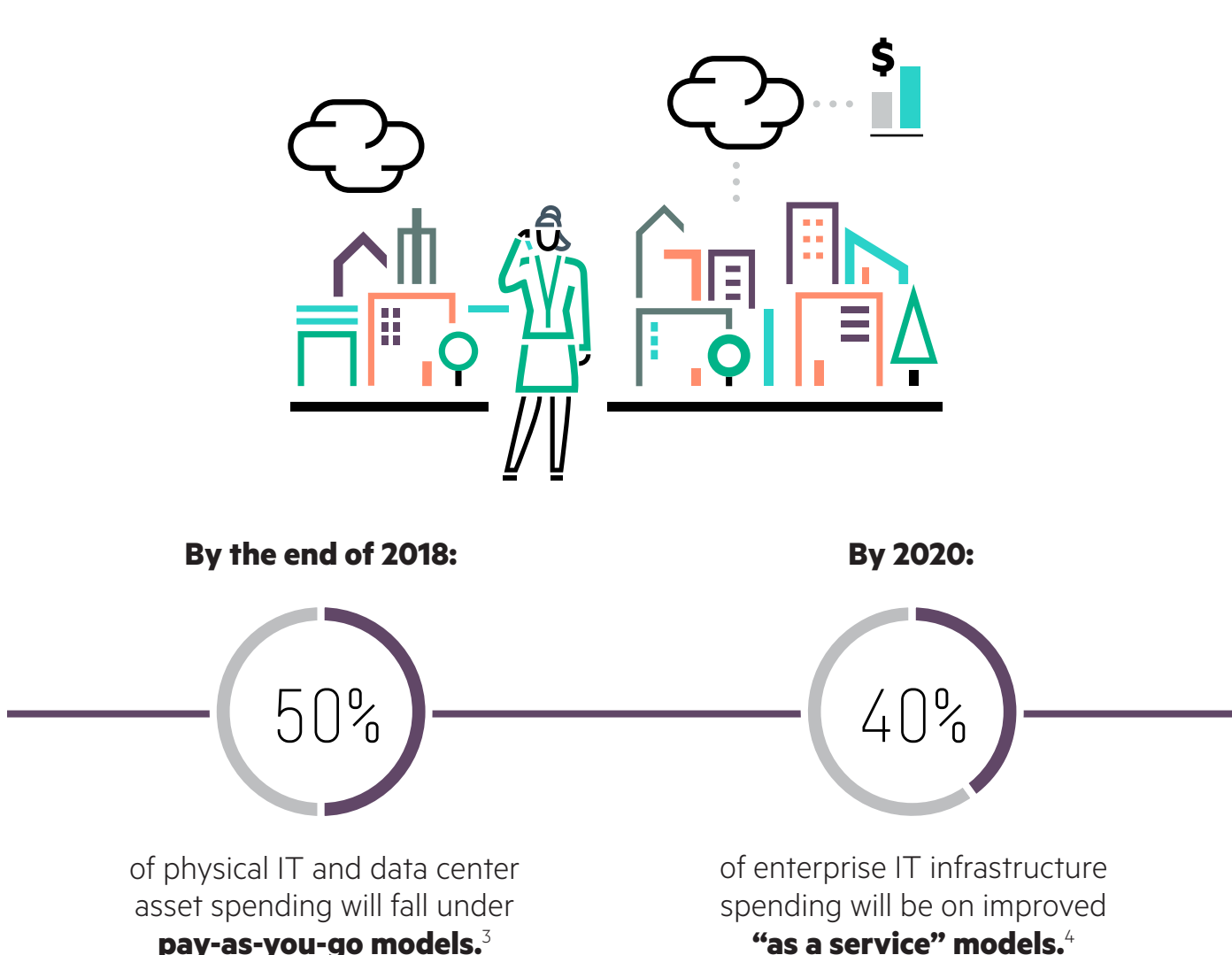
For better control, many businesses opt to keep critical workloads on premises to effectively manage performance and compliance.



This approach to IT can lead to **capacity-planning issues** that can often affect both performance and the bottom line.²

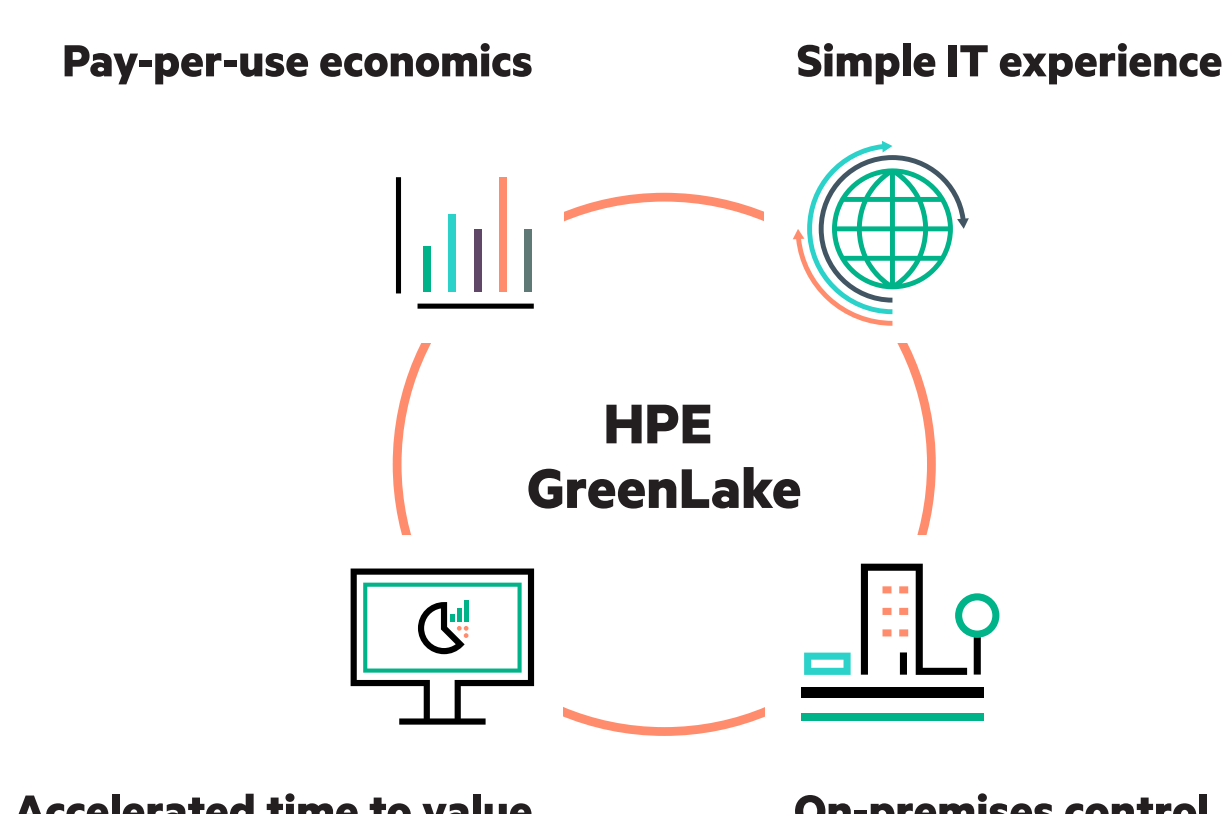


Meanwhile, new consumption models are providing **flexible options for consuming IT**.



Get the business outcomes you need—with the flexibility and economics of public cloud, and the security and control of your on-premises environment—with **HPE GreenLake**

HPE GreenLake delivered by HPE Pointnext is a suite of complete IT solutions—such as big data, edge computing, database, and more—delivered **on premises** in a **pay-per-use** model.



The bottom line: Get the **simplicity, agility and economics** of public cloud, and the **security, control and performance** benefits of on-premises IT on **your** terms—with HPE GreenLake.

Take control and simplify your IT experience today. Learn more by visiting: hpe.com/GreenLake

¹ Frost & Sullivan 2017 Cloud User Survey.
² 451 Research, "Best of both worlds," November 2016.
³ IDC FutureScape: Worldwide Datacenter 2017 Predictions, IDC #US41870916, October 2016.
⁴ IDC FutureScape: Worldwide Datacenter 2018 Predictions, IDC #US43152417, November 2017.